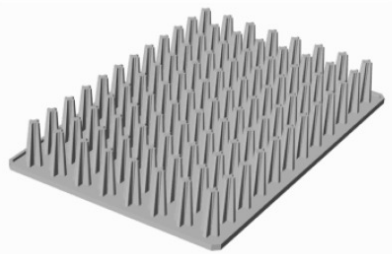


Instructions for removing Refill Carrier

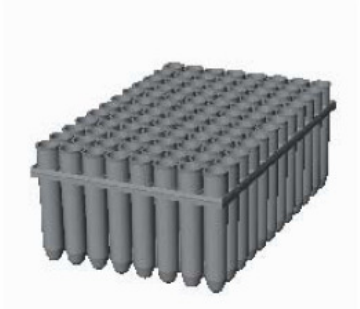
1. Place the transfer plate (below) with the pins down words in the **spaces between** the tubes.



2. Release the refill carrier by pressing the transfer plate down.
3. Strip the refill carrier downwards until it lies on the tube holder.
4. Place the supplied transfer plate (image 1) on top of the tubes with pins going **inside** the tubes.
5. Turn the rack upside down, so that the transfer plate lies on the bench and the rack bottom is on top.
6. Remove the tube holder (below).



7. Remove the refill carrier (below).



8. Place the tube holder back on the tubes.
9. Turn the rack around, correct again and place the lid on top of the tubes.
10. Ready to go.....